

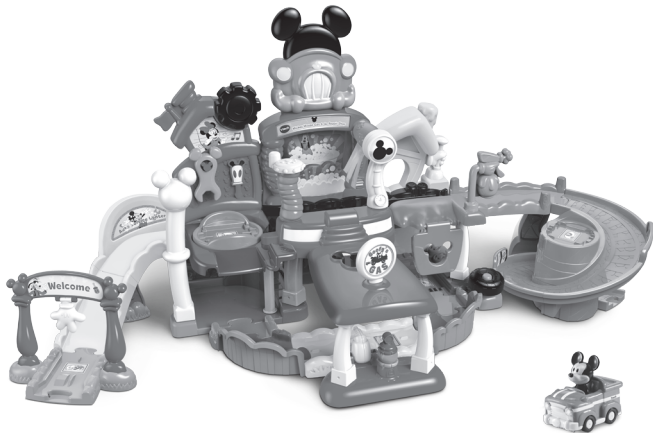
vtech®

Parent's Guide

Disney

Toot-Toot
Drivers®

Mickey's Repair Centre



© Disney
www.disney.com

91-003820-003 (AU)

VTech understands that a child's needs and abilities change as they grow and with that in mind we develop our toys to teach and entertain at just the right level...

vtech Baby

Toys that will stimulate their interest in different textures, sounds and colours

I am...

...responding to colours, sounds and textures

...understanding cause and effect

...learning to touch, reach, grasp, sit-up, crawl and toddle

Birth-36 months



Pre-School

Interactive toys to develop their imagination and encourage language development

I want...

...to get ready for school by starting to learn the alphabet and counting

...my learning to be as fun, easy and exciting as can be

...to show my creativity with drawing and music so my whole brain develops

3-6 years



Electronic Learning Computers

Cool, aspirational and inspiring computers for curriculum related learning

I need...

...challenging activities that can keep pace with my growing mind

...intelligent technology that adapts to my level of learning

...National Curriculum based content to support what I'm learning at school

4-10 years



To learn more about this and other VTech® products, visit www.vtech.com.au

INTRODUCTION

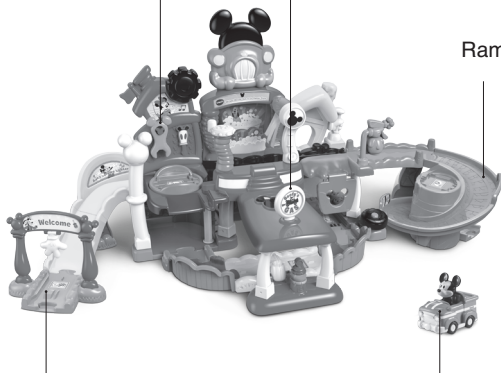
Thank you for purchasing the **Toot-Toot Drivers® Mickey's Repair Centre!**

Stop at the petrol station for a fill-up, drive through the car wash, and more while hearing Mickey Mouse say fun phrases to encourage play.

Wrench

Petrol Station Sign

Ramp Track



Seven **SmartPoint™** Locations

SmartPoint™ Mickey Mouse Truck

INCLUDED IN THIS PACKAGE



One **SmartPoint™**
Mickey Mouse Truck



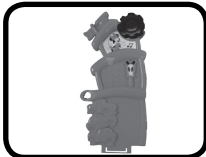
One car sign



One centre back wall



One right back wall



One left back wall



One left base



One right base



One spiral platform



One **SmartPoint™**
parking spot



One ramp track



One ramp track
support



One wrench



One welcome gate sign



One welcome gate



One **SmartPoint™** welcome gate track



One curved track



One curved track support



One downhill track



One pillar



One repair lift support



One left petrol station support



One right petrol station support



One garage support



One repair lift wall



One **SmartPoint™**
repair lift



One petrol
station awning



One petrol station
sign



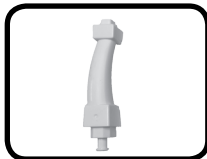
One petrol station
base



One fuel nozzle



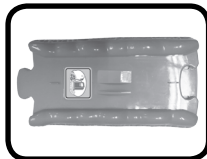
One fuel pump



One left petrol
station base support



One right petrol
station base support



One **SmartPoint™**
petrol station track



One car wash
roller



One car wash
entrance



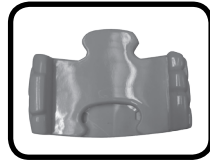
One spray paint
arm



One male
90-degree track



One female
90-degree track



One 1/4 straight
track



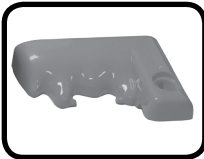
One male 1/4
straight track



One second level
base



One tyre



One garage roof



One garage door



One label sheet

- Parent's guide

WARNING:

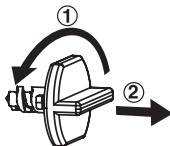
All packing materials such as tape, plastic sheets, packaging locks, removable tags, cable ties and packaging screws are not part of this toy and should be discarded for your child's safety.

NOTE: Please keep this parent's guide as it contains important information.

Adult assembly required.

Unlock the packaging locks:

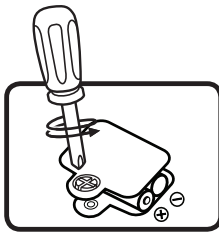
- ① Turn the packaging lock anticlockwise several times.
- ② Pull out the packaging lock and discard.



GETTING STARTED

Battery Removal and Installation Car

1. Make sure the unit is turned **OFF**.
2. Locate the battery cover on the bottom of the **Truck**, use a screwdriver to loosen the screw and open the battery cover.
3. Remove old batteries by pulling up on one end of each battery.
4. Install 2 new AAA (AM-4/LR03) batteries following the diagram inside the battery box. (The use of new alkaline batteries is recommended for maximum performance.)
5. Replace the battery cover and tighten the screw to secure the battery cover.



BATTERY NOTICE

- Use new alkaline batteries or fully charged NI-MH (Nickel Metal-hydride) rechargeable batteries for best performance.
- Use only batteries of the same or equivalent type as recommended.
- Do not mix different types of batteries: alkaline, standard (carbon-zinc) or rechargeable, or new and used batteries.
- Do not use damaged batteries.
- Insert batteries with the correct polarity.
- Do not short-circuit the battery terminals.
- Remove exhausted batteries from the toy.
- Remove batteries during long periods of non-use.
- Do not dispose of batteries in fire.
- Do not charge non-rechargeable batteries.
- Remove rechargeable batteries from the toy before charging (if removable).
- Rechargeable batteries are only to be charged under adult supervision.

Disposal of batteries and product



The crossed-out wheeled bin symbols on products and batteries, or on their respective packaging, indicates they must not be disposed of in domestic waste as they contain substances that can be damaging to the environment and human health.



The chemical symbols Hg, Cd or Pb, where marked, indicate that the battery contains more than the specified value of mercury (Hg), cadmium (Cd) or lead (Pb) set out in Battery Directive (2006/66/EC).

The solid bar indicates that the product was placed on the market after 13th August, 2005.

Help protect the environment by disposing of your product or batteries responsibly.

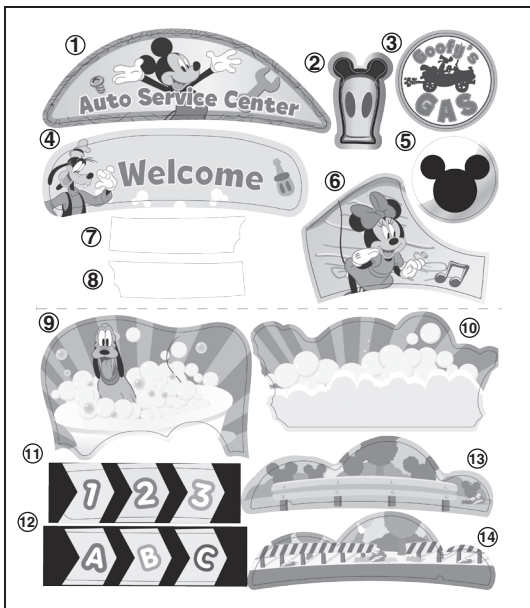
For more information, please visit:

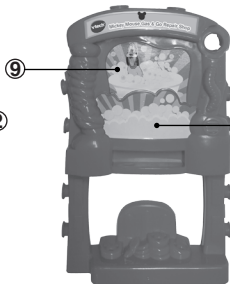
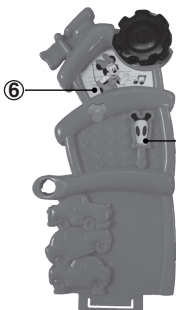
www.recycle-more.co.uk

www.recyclenow.com

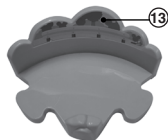
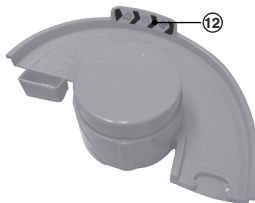
LABEL APPLICATION

Please securely stick the labels onto the play set as indicated below:





10

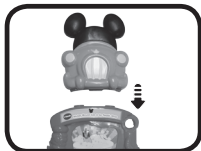


ASSEMBLY INSTRUCTIONS

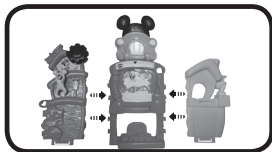
Mickey's Repair Centre

With the **Toot-Toot Drivers**® Mickey's Repair Centre, safety comes first. To ensure your child's safety, adult assembly is required.

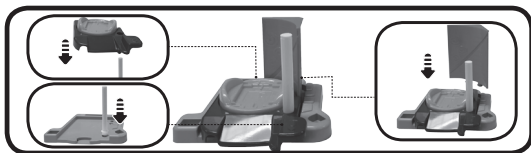
1. Connect the **Car Sign** to the **Centre Back Wall**.



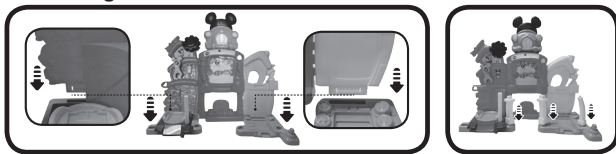
2. Attach both the **Left Back Wall** and the **Right Back Wall** to the **Centre Back Wall**, as shown below. You may also hang the **Wrench** on the peg on the **Left Back Wall** at this time.



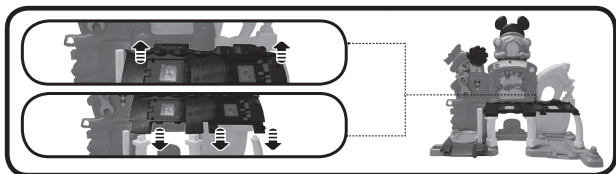
3. Insert the **Repair Lift Support**, **SmartPoint™ Repair Lift** and **Repair Lift Wall** into the **Left Base**, as shown below.



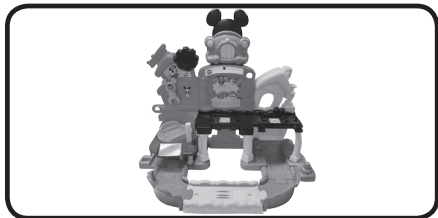
4. Insert the connected **Walls, Left Petrol Station Support, Right Petrol Station Support** and **Garage Support** into the **Left Base** and the **Right Base**, as shown below.



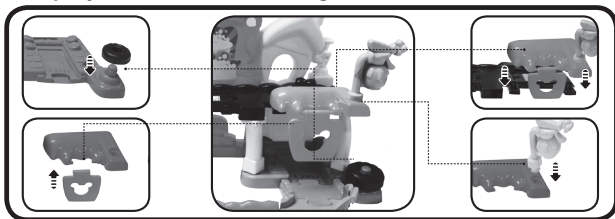
5. Attach the **Second Level Base** to the connected **Walls** and three **Supports**, as shown below.



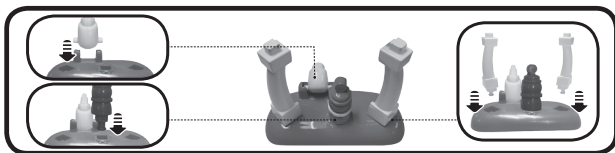
6. In order from left to right, connect the **1/4 Straight Track, Male 90-Degree Track, SmartPoint™ Petrol Station Track, Female 90-Degree Track** and **Male 1/4 Straight Track** together and connect to play set.



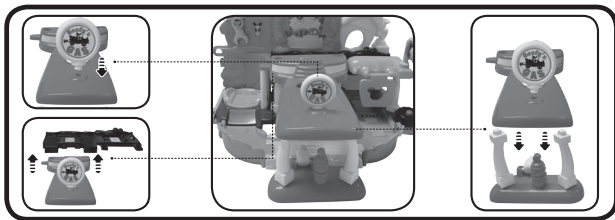
7. On the **Right Base** near the garage, attach the **Tyre**, as shown below. Then, connect the **Garage Door** to the **Garage Roof**. Connect the **Garage Roof** to the **Second Level Base**. Connect the **Spray Paint Arm** to the **Garage Roof**.



8. Insert the **Fuel Nozzle**, **Fuel Pump**, and both the **Left and Right Petrol Station Base Supports** into the **Petrol Station Base** as shown below.



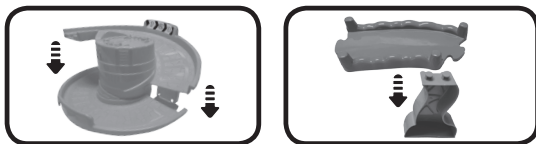
9. Connect the **Petrol Station Sign** to the **Petrol Station Awning**. Then, connect the **Petrol Station Awning** to the **Petrol Station Base** and the **Second Level Base**.



10. Insert the **Car Wash Roller** and the **Car Wash Entrance** into the **Petrol Station Awning**.



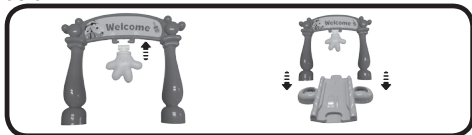
11. Attach the **SmartPoint™ Parking Spot** to the **Spiral Platform** and insert the **Ramp Track Support** into the **Ramp Track**, as shown below.



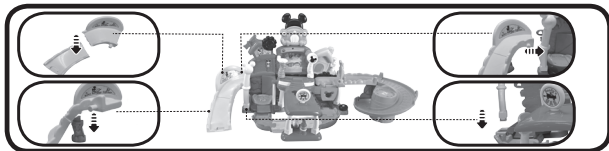
12. Connect the **Ramp Track** to the **Second Level Base** and **SmartPoint™ Parking Spot** together, as shown below.



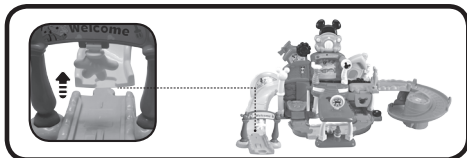
13. Attach the **Welcome Gate Sign** to the **Welcome Gate**, and insert the **Gate** into the **SmartPoint™ Welcome Gate Track**, as shown below.



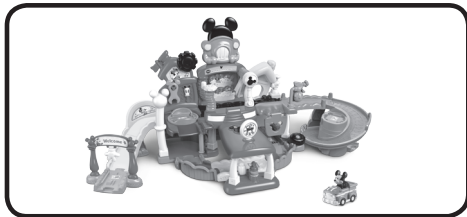
14. Insert the **Curved Track Support** into the **Curved Track**, the **Pillar** into the **Left Base**, and then connect the **Curved Track** to the **Left Back Wall** and **Pillar**, as shown below.



15. Connect the **Curved Track** and the **SmartPoint™ Welcome Gate Track** with the **Downhill Track**, as shown below.

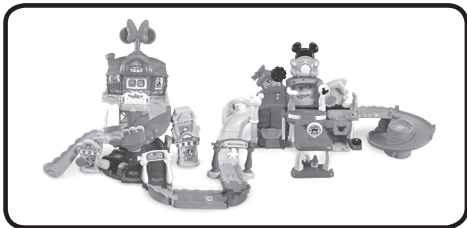


Once you've completed the above steps, you are ready to play! You can connect the play set to the included **SmartPoint™** track and other **Toot-Toot Drivers®** play sets and tracks (each sold separately).



EXPAND & EXPLORE



Connect to the **Toot-Toot Drivers® Minnie Mouse Around Town Play Set** (as shown below) or other **Toot-Toot Driver®** play sets (each sold separately) to expand the **Mickey's Repair Centre** and inspire creativity.

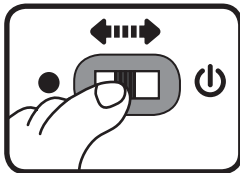


PRODUCT FEATURES

Truck

1. On/Off Switch

To turn the unit **On**, slide the **On/Off Switch** to the **On**  position. To turn the unit **Off**, slide the **On/Off Switch** to the **Off**  position.



2. Automatic Shut Off

To preserve battery life, the **Truck** will automatically power down after approximately 60 seconds without input. The unit can be turned on again by pressing Mickey Mouse, pushing the **Truck** quickly or triggering a **SmartPoint™** location.

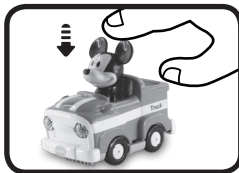
NOTE: This product is in Try-Me mode in the packaging. After opening the package, turn the **Truck** off and on again to proceed with normal play. If the unit repeatedly powers down while playing, we suggest changing the batteries.

ACTIVITIES

Truck

1. Mickey Mouse Button

Press Mickey Mouse to hear sounds, songs and phrases. The lights will flash with sounds.



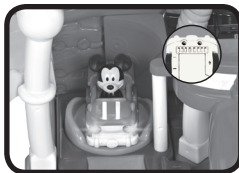
2. Sounds and Melodies

Push the **Truck** to hear fun sounds and melodies. While a melody is playing, push the truck again to add in fun sounds on top of the melody. The lights will flash with the sounds.



3. SmartPoint™ Locations

For added fun, the **Truck** interacts with the **Toot-Toot Drivers® Mickey's Repair Centre**. Simply place the **Truck** on one of the seven **SmartPoint™** locations to see the **Truck** lights flash and to hear fun sounds, short tunes and phrases. The **Truck** even interacts with other **Toot-Toot Drivers®** play sets (each sold separately).

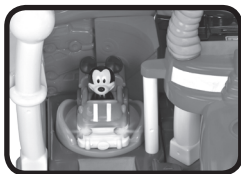


ACTIVITIES

Mickey's Repair Centre

1. SmartPoint™ Locations

Place the **Truck** or any **SmartPoint™** vehicle (each sold separately) on the seven **SmartPoint™** locations to trigger fun sounds and phrases.



2. Motor Skills

Put the **Truck** on the **SmartPoint™ Repair Lift** to pretend to make repairs and then push the **Truck** to the **SmartPoint™** car wash and **SmartPoint™** paint station on the **Second Level** to trigger fun sounds and phrases.



SONG LYRICS

1. Take a drive down the road.
Say hello to the friends I know.
I can help, so call on me,
I use my truck to help my friends in need.
2. My truck can carry any load,
My tyres can take any road.
3. My truck is tough, my truck is strong.
My truck can do any job.

MELODY LIST

1. "Billy Boy"
2. "Shoo Fly, Don't Bother Me"
3. "Big Rock Candy Mountain"
4. "A-Hunting We Will Go"
5. "In the Good Old Summertime"
6. "Hickory Dickory Dock"

CARE & MAINTENANCE

1. Keep the unit clean by wiping it with a slightly damp cloth.
2. Keep the unit out of direct sunlight and away from any direct heat source.
3. Remove the batteries when the unit will not be in use for an extended period of time.
4. Do not drop the unit on hard surfaces and do not expose the unit to moisture or water.

TROUBLESHOOTING

If for some reason the unit stops working or malfunctions, please follow these steps:

1. Please turn the unit **OFF**.
2. Interrupt the power supply by removing the batteries.
3. Let the unit sit for a few minutes, then replace the batteries.
4. Turn the unit **ON**. The unit should now be ready to play again.
5. If the unit still does not work, replace with an entire set of new batteries.

If the problem persists, please call our Consumer Services Department and a service representative will be happy to help you.

CONSUMER SERVICES

Creating and developing **VTech**[®] products is accompanied by a responsibility that we at **VTech**[®] take very seriously. We make every effort to ensure the accuracy of the information, which forms the value of our products. However, errors sometimes can occur. It is important for you to know that we stand behind our products and encourage you to call our Consumer Services Department with any problems and/or suggestions that you might have. A service representative will be happy to help you.

UK Customers:

Phone: 0330 678 0149 (from UK) or +44 330 678 0149 (outside UK)

Website: www.vtech.co.uk/support

Australian Customers:

Phone: 1800 862 155

Website: support.vtech.com.au

NZ Customers:

Phone: 0800 400 785

Website: support.vtech.com.au

PRODUCT WARRANTY/ CONSUMER GUARANTEES

UK Customers:

Read our complete warranty policy online at vtech.co.uk/warranty.

Australian Customers:

VTECH ELECTRONICS (AUSTRALIA) PTY LIMITED –
CONSUMER GUARANTEES

Under the Australian Consumer Law, a number of consumer guarantees apply to goods and services supplied by VTech Electronics (Australia) Pty Limited. Please refer to vtech.com.au/consumerguarantees for further information.



CLASS 1
LED PRODUCT



**Visit our website for more
information about our products,
downloads, resources and more.**

www.vtech.co.uk
www.vtech.com.au



TM & © 2020 VTech Holdings Limited.
All rights reserved.
Printed in China.
91-003820-003 